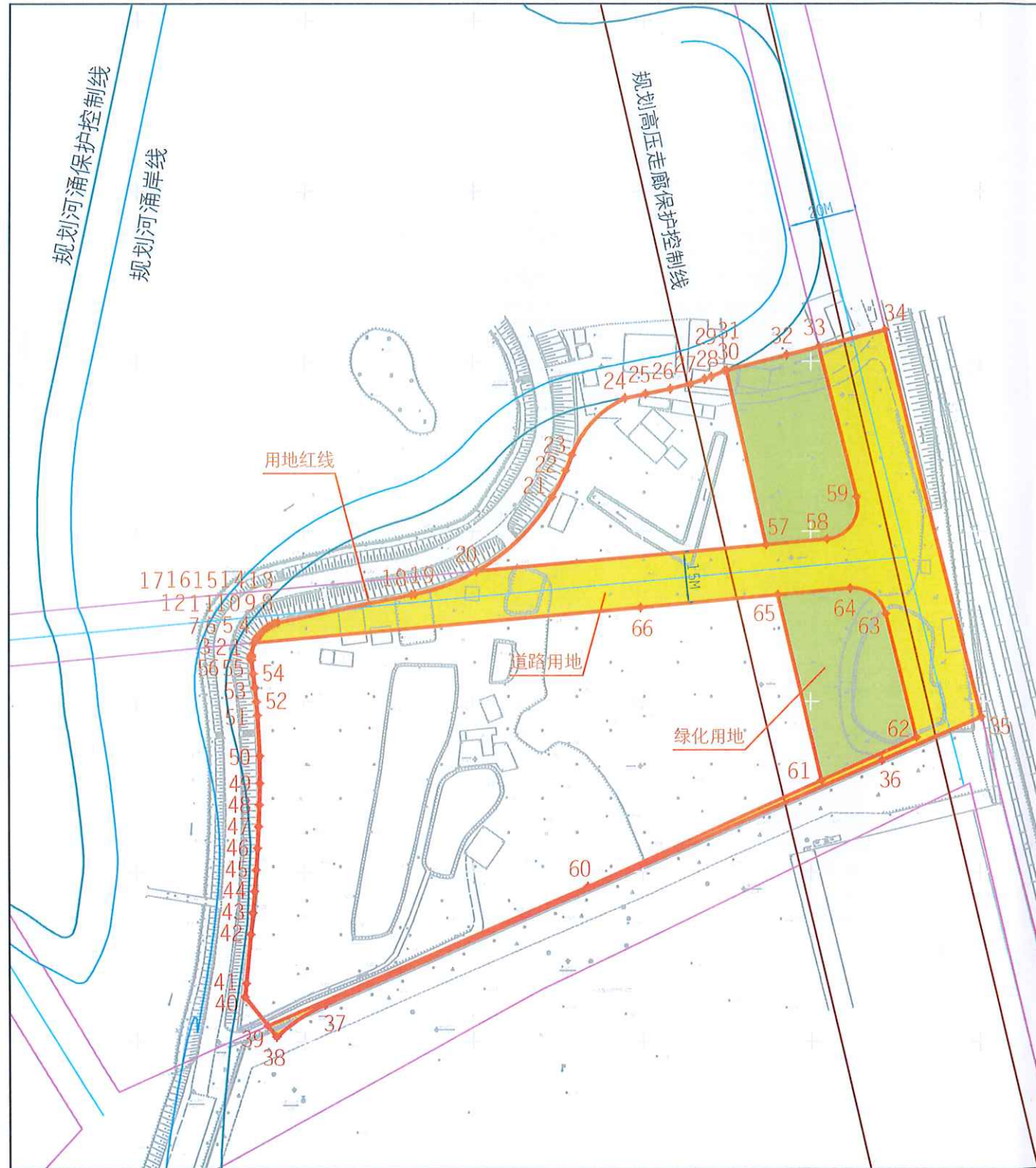


# 建设用地规划红线图



地上桩点表 (共 66 个桩点)					广州市平面坐标系			1980西安坐标系					
广州市平面坐标系		1980西安坐标系		序号	X坐标(米)	Y坐标(米)	序号	X坐标(米)	Y坐标(米)				
1	2361.3063	63884.163	1	2553299.541	38450354.090	55	23612.191	63884.198	55	2553298.668	38450354.121		
2	2361.3319	63884.168	2	2553299.797	38450354.098	56	23612.310	63884.181	56	2553298.787	38450354.105		
3	2361.3774	63884.194	3	2553300.251	38450354.125	57	23646.185	64036.889	57	2553331.926	38450506.978		
4	2361.7333	63885.093	4	2553303.806	38450355.042	58	23647.818	64054.868	58	2553333.472	38450524.956		
5	2361.8400	63885.640	5	2553304.870	38450355.594	59	23660.243	64063.655	59	2553345.854	38450533.813		
6	2361.8579	63885.747	6	2553305.049	38450355.702	60	23545.646	63983.783	60	2553231.642	38450453.387		
7	2361.8963	63885.993	7	2553305.431	38450355.949	61	23576.853	64053.161	61	2553262.514	38450522.916		
8	2361.9458	63886.345	8	2553305.925	38450356.304	62	23589.556	64081.401	62	2553275.081	38450551.218		
9	2361.9545	63886.411	9	2553306.012	38450356.371	63	23625.852	64072.289	63	2553311.421	38450542.281		
10	23620.160	63886.927	10	2553306.624	38450356.889	64	23633.376	64061.685	64	2553318.997	38450531.713		
11	23620.764	63887.522	11	2553307.225	38450357.487	65	23631.438	64040.350	65	2553317.162	38450510.358		
12	23621.319	63888.162	12	2553307.777	38450358.130	66	23627.724	63999.470	66	2553313.645	38450469.470		
13	23621.822	63888.845	13	2553308.277	38450358.815	地上弧段表 (共 19 个弧段)			地上弧段表 (共 19 个弧段)				
14	23622.288	63889.566	14	2553308.719	38450359.538	端点	中点		半径(米)	端点	中点		半径(米)
15	23622.656	63890.320	15	2553309.104	38450360.294	X坐标(米)	Y坐标(米)		X坐标(米)	Y坐标(米)			
16	23622.982	63891.102	16	2553309.426	38450361.078	37.38	23506.801	63988.214	50.00	37.38	2553193.209	38450367.629	50.00
17	23623.245	63891.908	17	2553309.685	38450361.885	41.42	23524.366	63883.215	868.89	41.42	2553210.846	38450352.715	868.89
18	23631.469	63931.774	18	2553317.717	38450401.792	49.50	23580.014	63886.634	225.70	49.50	2553266.479	38450356.403	225.70
19	23631.641	63932.774	19	2553317.884	38450402.792	50.51	23590.027	63886.373	225.40	50.51	2553276.493	38450356.189	225.40
20	23638.394	63951.129	20	2553324.548	38450421.180	51.52	23598.008	63885.844	225.75	51.52	2553284.477	38450355.700	225.75
21	23660.213	63973.512	21	2553346.260	38450443.668	52.53	23602.057	63885.467	233.66	52.53	2553288.528	38450355.342	233.66
22	23668.005	63977.453	22	2553354.033	38450447.647	53.54	23606.185	63885.009	243.10	53.54	2553292.638	38450354.903	243.10
23	23672.517	63979.157	23	2553358.537	38450449.373	54.55	23610.205	63884.483	234.84	54.55	2553296.681	38450354.397	234.84
24	23689.199	63994.779	24	2553375.143	38450465.075	1.2	23613.191	63884.165	10.82	1.2	2553299.669	38450354.093	10.82
25	23690.467	64000.926	25	2553376.382	38450471.229	3.5	23616.169	63884.654	10.82	3.5	2553302.644	38450354.597	10.82
26	23691.959	64008.346	26	2553377.838	38450478.656	6.7	23618.772	63885.868	10.82	6.7	2553305.242	38450355.823	10.82
27	23693.469	64014.384	27	2553379.319	38450484.701	8.9	23619.502	63886.378	10.82	8.9	2553305.968	38450356.337	10.82
28	23694.814	64018.528	28	2553380.644	38450488.852	18.19	23631.556	63932.274	630.48	18.19	2553317.801	38450402.292	630.48
29	23695.548	64020.539	29	2553381.368	38450490.867	19.21	23641.584	63956.189	61.00	19.21	2553327.714	38450426.255	61.00
30	23697.272	64024.569	30	2553383.073	38450494.905	21.22	23644.039	63975.622	61.00	21.22	2553350.075	38450445.797	61.00
31	23697.419	64025.146	31	2553383.217	38450495.482	22.23	23670.240	63978.362	47.46	22.23	2553356.263	38450448.567	47.46
32	23701.925	64042.846	32	2553387.637	38450513.205	23.24	23682.404	63985.317	30.00	23.24	2553368.394	38450455.581	30.00
33	23704.333	64052.438	33	2553389.999	38450522.869	63.64	23631.573	64068.377	10.00	63.64	2553317.161	38450538.396	10.00
34	23709.238	64071.975	34	2553394.810	38450542.369	58.59	23652.003	64062.129	10.00	58.59	2553337.622	38450532.246	10.00
35	23795.562	64100.514	35	2553280.994	38450570.360	地上面积表 (以广州市平面坐标系数据计算)							
36	23882.778	64071.108	36	2553268.352	38450540.892	用地面积	24822.990 平方米						
37	23510.918	63905.811	37	2553197.289	38450375.246	道路用地面积	5013.592 平方米						
38	23501.437	63891.439	38	2553187.878	38450360.828	城市绿地面积	3068.770 平方米						
39	23504.705	63888.838	39	2553191.159	38450358.243	净面积	16740.627 平方米						
40	23513.205	63882.074	40	2553199.693	38450351.519								
41	23517.136	63882.492	41	2553203.621	38450351.957								
42	23531.601	63883.877	42	2553218.078	38450353.412								
43	23537.902	63884.476	43	2553224.377	38450354.041								
44	23544.246	63885.008	44	2553230.718	38450354.604								
45	23550.595	63885.469	45	2553237.056	38450355.095								
46	23556.950	63885.861	46	2553243.419	38450355.518								
47	23563.308	63886.182	47	2553249.775	38450355.870								
48	23569.670	63886.433	48	2553256.136	38450356.151								
49	23575.995	63886.614	49	2553262.460	38450356.363								
50	23584.032	63886.583	50	2553270.497	38450356.371	收案号	20180600018975						
51	23596.014	63886.003	51	2553282.483	38450356.849	发文、 发证编号	穗国土规选[2018]204号						
52	23600.000	63885.668	52	2553286.470	38450355.533	核发单位	广州市国土资源和规划委员会						
53	23604.112	63885.248	53	2553290.584	38450355.133	核发日期	2018-09-26						
54	23608.216	63884.752	54	2553294.690	38450354.657								

附注：本图采用广州市平面坐标系和高程系统；图中界桩坐标表之1980西安坐标系数据供国土等部门参考使用。

